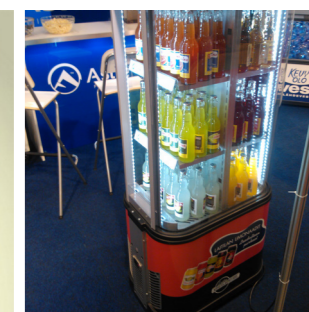




MAIN FEATURES

- Transparent sides for excellent product visibility
- Four (4) vertical LEDs
- Large and smooth surfaces for easy branding
- Easy maintenance
- Easy to move with high quality and rotating wheels
- Environment-friendly refrigerant R290



OPEN FRONT COOLER

TECHNICAL DETAILS

	SUBSTER® SR 150
Net weight (kg)	80
Gross volume (l)	200
Net volume (l)	180
External dimensions W x D x H (mm)	650 x 450 x 1490
Internal dimensions W x D x H (mm)	380 x (260 x 2) x 885
Power input W (220-240V, 50Hz)	280
Defrosting	Automatic
Lighting	4 x vertical LED
Compressor	Danfoss
Refrigerant	R290
Evaporator type	Finned coil
Condenser type	Steel (maintenance free)
Temperature control	Electronical

ENERGY CONSUMPTION

	EN 23953
Energy consumption (kWh/24h)	6,5
Energy class	C

SHELF DIMENSIONS

Adjustable shelf W x D (mm)	378 x 210
Amount of adjustable shelves (pcs)	3
Bottom layer W x D (mm)	380 x 215

TRANSPORTATION

Gross weight (kg)	85
Package size W x D x H (mm)	600 x 800 x 1700
Quantity in 20ft container (pcs)	21
Quantity in 40ft container (pcs)	45
Quantity in 13,6m truck (pcs)	68

TEMPERATURES

Temperature range	+1°C to +6°C
Operating conditions min - max	+10°C to +25°C/65%RH
Classification EN 23953	3H2*

OPTIONS

Full branding
Special color (RAL color system)
3D top / canopy

W x D x H W 650 mm D 450 mm H 1490 mm	HC R290	0.25 L 280 pcs	0.5 L 90 pcs	13.6 M 68 pcs	W x D x H W 800 mm D 600 mm H 1700 mm
KG 80 kg	RANGE +1°C to +6°C	0.33 L 180 pcs	0.33L 90 pcs	40ft 45 pcs	KG 85 kg

*You can check the detailed information from the beginning of the product catalogue or via the link: www.astecoolers.com/products